

Wireless Printing from a Mac

Wireless printing within the library requires you to download and temporarily install a small file to your computer. This program will automatically uninstall itself when you shut off your computer.

1. Make sure you're connected to the WiFi by clicking the WiFi icon at the top of your computer.

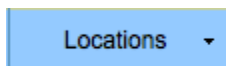


You should see a check mark next to “Library WiFi”



2. Go to the website <http://mohavecountylibrary.info>

3. Mouse of the “locations” tab



4. Select the location where you are connected to the WiFi

Locations		Current Events
Bookmobile		
Senior Bookmobile		
Bullhead City		
Chloride		
Dolan Springs		
Golden Shores/Topock		
Golden Valley		
Kingman		
Lake Havasu City		
Meadview		
South Mohave Valley		
Valle Vista		

5. Scroll down and click on “Wireless In-Library Printing”



6. Click on on the appropriate link for the Mac print client.

To run the Print Client for a Windows environment, click the link [here](#).
To run the Print Client on a Mac environment (Intel-only), click the link [here](#).

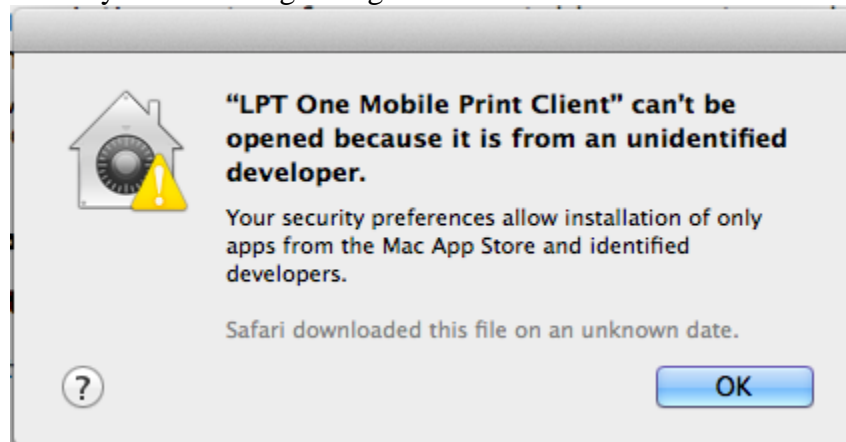
7. Your downloads will populate with the following icon



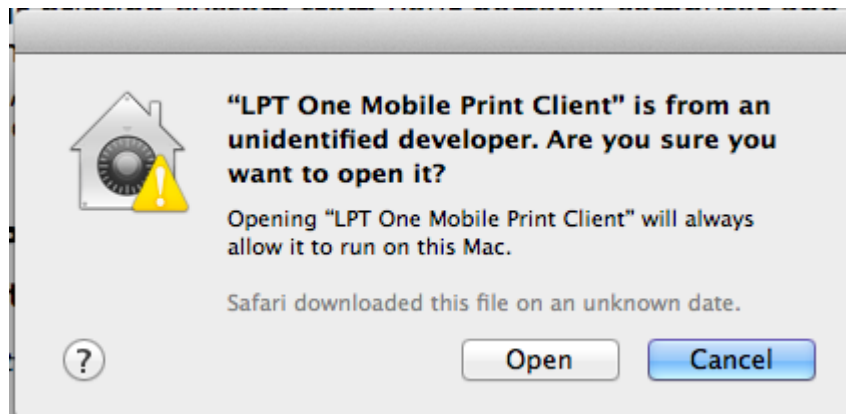
8. Hold down the **CONTROL** button and **Click** on this icon in your downloads



NOTE If you do not hold down **CONTROL** while clicking you may not be able to run the executable as illustrated by the following dialogue box...



9. Click on "Open"

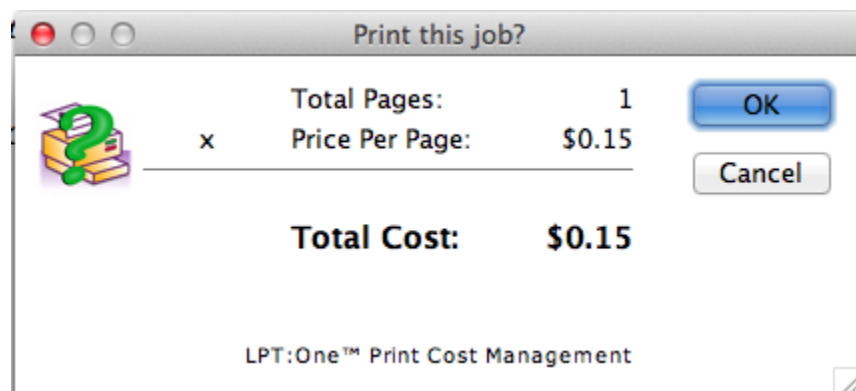
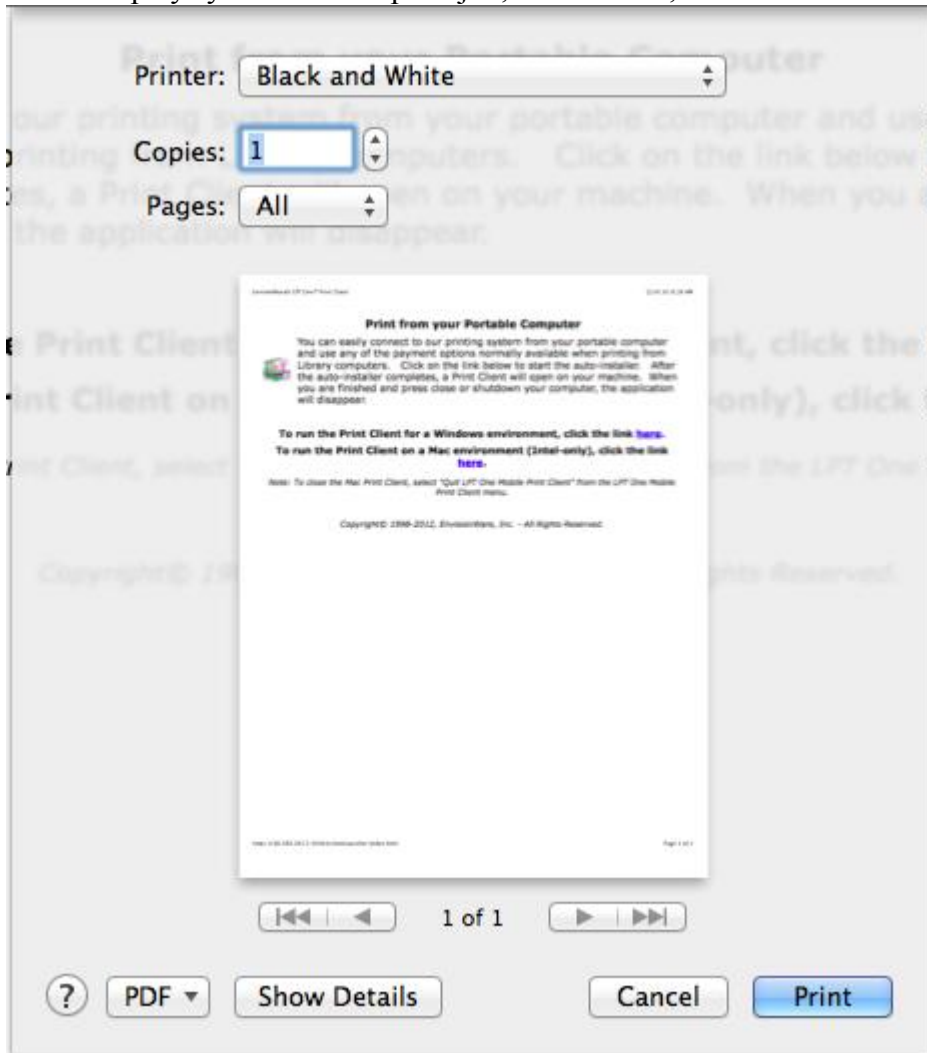


10. When the printing software is running and ready to accept print jobs its icon will appear on your dock



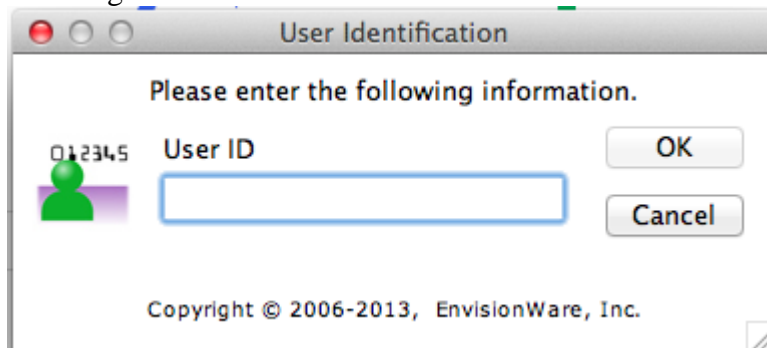
\

11. Attempt to print, in the dialogue box verify that the selected printer is “Black and White” and make sure the print preview displays your intended print job, if all is well, click “Print”



12. The print software will inform you of the cost associated with your print job

13. A dialogue will open asking your for your library card number or a User ID, enter **any number** you wish that you will not forget



14. The software will submit the print job to the print server, at this point you will go collect your print job from the printing kiosk.

